

# How to connect your SA725 to your transmitter

## SA725 Signal Amplifier

Designed for extending the range of 72MHz radio devices. The unit provides the transmit power amplification. Ideal for increasing the range of 72MHz radio devices and to compensate for cable loss in certain installations.

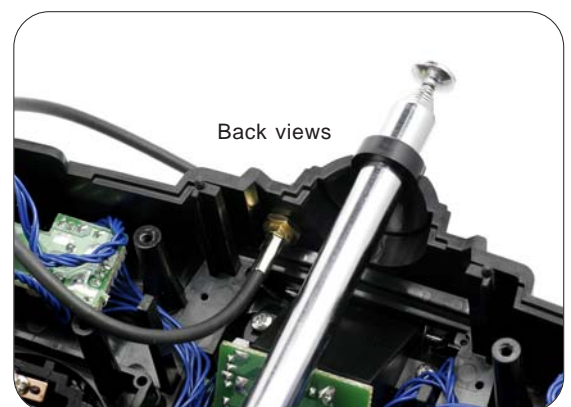
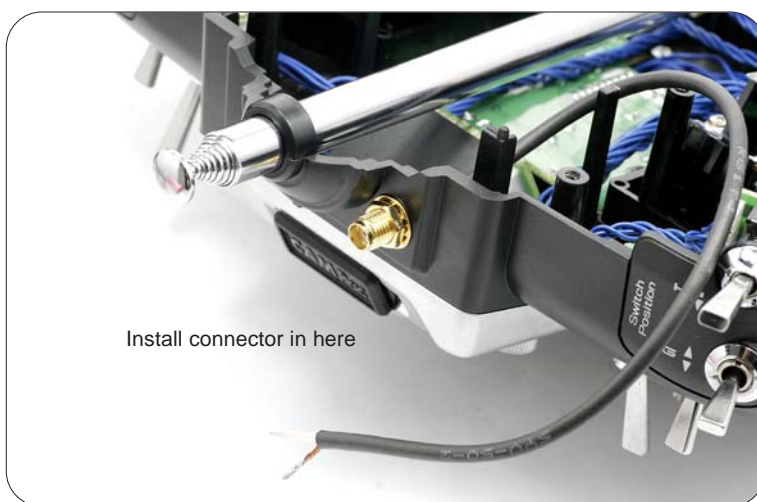


7W up to >15km

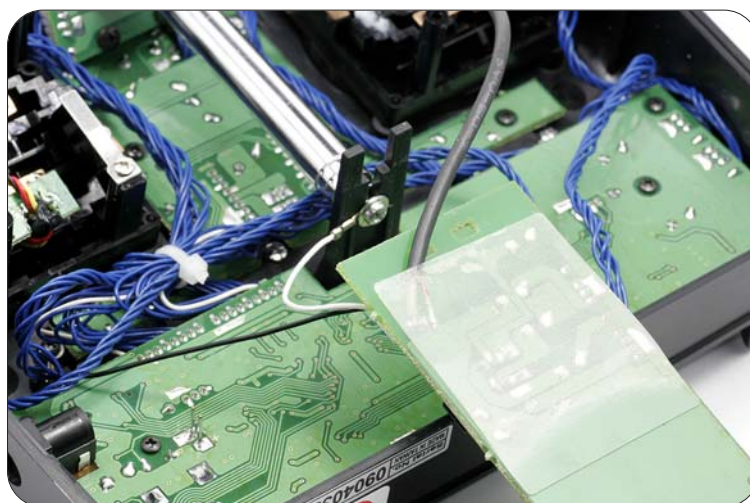
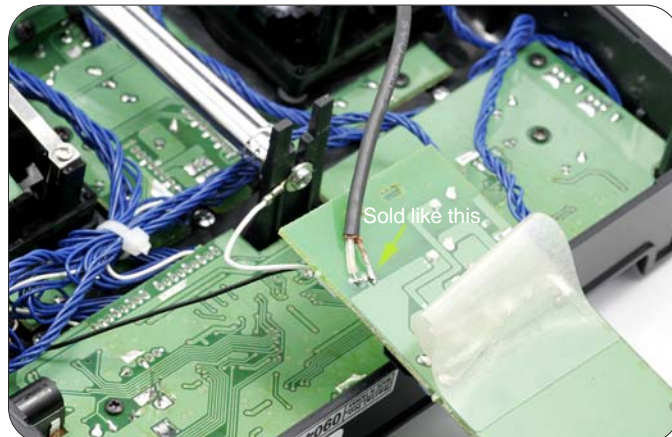
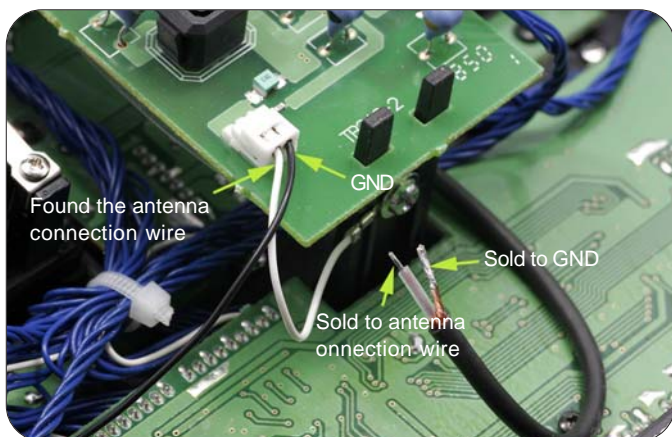
### STEP 1



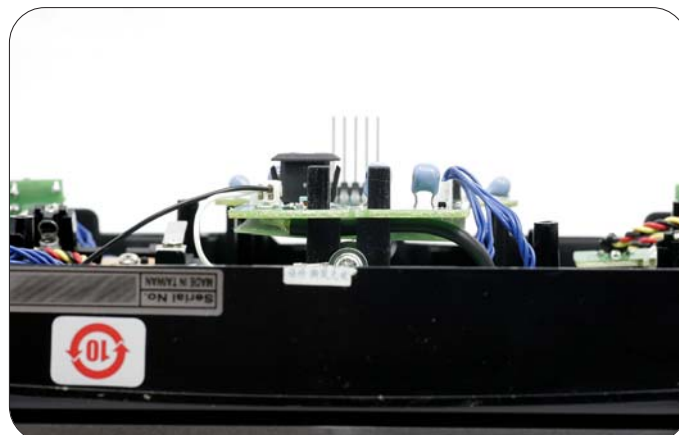
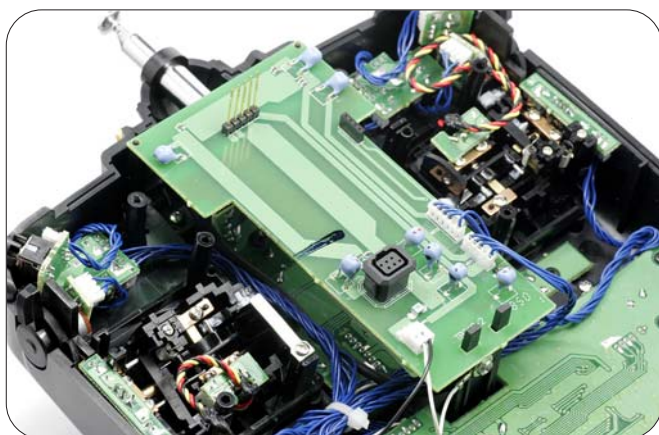
### STEP 2



STEP 3



STEP 4



Restitution

## STEP 5



Overview

## STEP 6

Completed



Supply DC 9V-12V